



ADJUSTED FIT

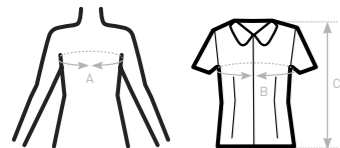
- Cotton rich polycotton Oxford fabric with **Easy Care** finish
- Soft feminine collar
- Cross stitched mother-of-pearl effect buttons (except Oxford Blue: mother-of-pearl effect white buttons)
- Short sleeves with narrow cuffs
- Darts at bustline & back panel for a feminine shape
- Horizontal last buttonhole
- Curved bottom hem



- 70% **combed** cotton - 30% polyester
- Oxford
- 135 g/m<sup>2</sup> = **EASY CARE**
- XS > 6XL
- 1 pc/pack & 10 pcs/carton
- 



**DUO**  
**CONCEPT**  
with B&C Oxford SSL /men



SIZES [CM]

B&C OXFORD SSL /W. SW 004		US	XS	S	M	L	XL	XXL	XXXL	4XL	5XL	6XL
A DRESS SIZE	FR	36	38	40	42	44	46	48	50	52	54	56
	IT	40	42	44	46	48	50	52	54	56	58	
	EU	34	36	38	40	42	44	46	48	50	52	
B CHEST SIZE	UK	8	10	12	14	16	18	20	22	24	26	
	CM	91	96	101	106	111	116	121	126	131	136	
C CENTER BACK LENGTH		CM	65	66	67	68	69	70	71	72	73	74



WOMEN'S SHORT SLEEVED EASY CARE OXFORD SHIRT

