

CHOOSE THE RIGHT SHIRT FOR YOU

This guide contains the key details of all our Russell Collection shirts and the fits, styles and colours available to choose from. Whatever your customers' needs, we can help find the perfect shirt. From warehouse to office to front of house, we have a style and fabric choice for everyone.

THE RIGHT SHIRT IN THE RIGHT FIT

Our shirts come in a choice of three fits – classic, tailored and fitted. With sizes up to 6XL there's a fit for everybody. Along with the choice of fabrics and colours, it's another element your clients can mix and match to achieve a truly distinctive look.

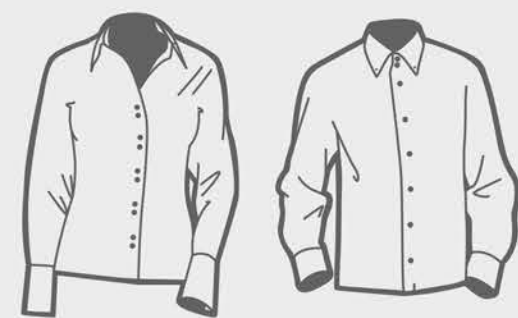


Classic

A traditional shaped shirt for a relaxed fit.

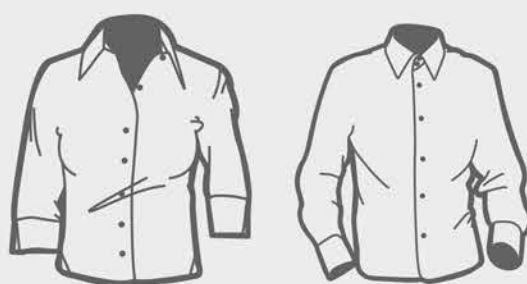
Tailored

A semi-fitted shirt for a more contemporary look.



Fitted

An ultra slim fit for a stylish and fashionable appearance.



For full product details visit:

www.russelleurope.com

Fitted Stretch

The fitted cut and contemporary design make this an ideal choice for a modern appearance. The 3% elastane poplin fabric provides added comfort.

- Smart single button collars
- Stylish elbow length 3/4 sleeve with split cuff (ladies')
- Mitred double buttoned cuff with single button (men's long sleeve).
- Rounded hem
- Easy care

COLOURS:



MATERIAL:

97% cotton/3% elastane poplin



100% Cotton Poplin

Elegant and durable with the comfort of 100% cotton in a classic cut and design. This is an excellent choice for officewear, corporate events and busy retail environments.

- A reliable and versatile all rounder
- Classic style collars
- Rounded 2 button adjustable cuffs on men's and ladies' long sleeves
- Easy care

COLOURS:



MATERIAL:

100% cotton poplin

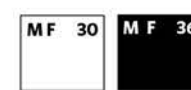


Ultimate Stretch

The first shirt in the market to use the revolutionary elastomultiester (LYCRA® T400® fibre), this is a truly premium business shirt. It retains its shape to look and feel great all day long.

- Excellent shape retention for a lasting fit
- Lycra® stretch fabric for maximum comfort
- Short leaf, semi cutaway collar for men and a neat modern collar for ladies
- Narrow placket for men and a concealed placket for ladies
- Darts at back

COLOURS:



MATERIAL:

75% cotton/25% elastomultiester (LYCRA® T400® fibre)

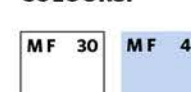


Herringbone

A distinctive and practical alternative to the classic Oxford that combines style with durability. Herringbone's distinctive chevron pattern makes it a classic retail fabric.

- Smart and formal look
- Stylish collars and cuffs
- No show through
- Narrow placket
- Curved hem
- Easy care

COLOURS:



MATERIAL:

84% cotton/16% polyester mini herringbone



Ultimate Non-Iron

An advanced fibre treatment and taped seams create a 100% cotton shirt that is truly non-iron and that stays wrinkle free for longer, so the wearer stays looking smart all day.

- Taped seams ensure it keeps its shape longer
- Mitred cuff (men's) and long flared cuff (ladies') on long sleeves
- Double turnback hem on short sleeves
- Rounded hem

COLOURS:



MATERIAL:

100% cotton micro twill

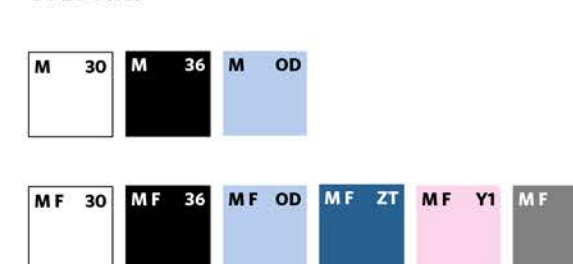


Oxford

A classic corporate choice in a distinctive, high quality fabric, the Oxford is our most popular shirt. Smart, versatile and practical, it's ideal for any business team.

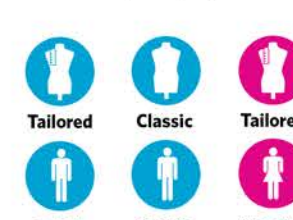
- A durable shirt that washes and irons beautifully
- Oxford weave has a distinctive, textured finish
- Stylish, rounded 2 button adjustable cuffs (on men's and ladies' long sleeve)
- Rounded hems
- Easy care

COLOURS:



MATERIAL:

70% cotton/30% polyester



PolyCotton Poplin

Easy care and extremely versatile, our PolyCotton Poplin Shirts are all about choice. 2 fits, 5 sleeve lengths and a wide range of colours mean it's a great style for team clothing.

- Classic Fit features a boned collar for men and single button collar for ladies
- Ladies' Fitted Fit has darts on bust front hem and back panel for a fitted shape
- Stylish, rounded two button adjustable cuffs on men's and ladies' long sleeves
- Classic Fit available in five vibrant new colours
- Easy care

COLOURS:



MATERIAL:

65% polyester/35% cotton poplin

